

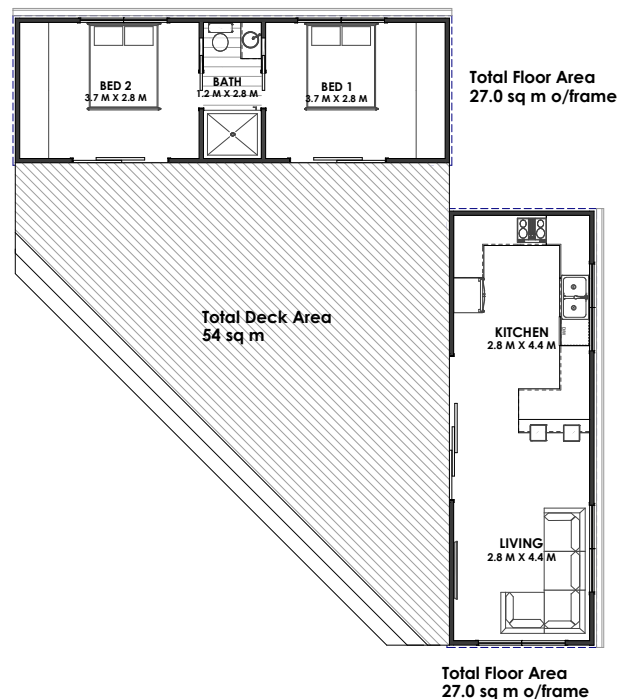


These stylish and functional Onoke transportable cabins are perfect for a coastal retreat, lakeside escape, or secluded hideaway in the bush. With a focus on maximising outdoor entertainment, they offer the ideal space to soak in the scenery and sunshine while still enjoying the comforts of home indoors.

The Onoke transportable cabins are currently located at Raglan, fully complete as a show home to view.

- Built by a Qualified LBP (Licensed Building Practitioner) builder with 24+ years of experience
- Constructed to industry standard NZS 3604
- Plumbing, Gas, and Electrical Certificates provided

Set of Two 9x3 Transportable Cabins (Totalling 54m²)
Price: \$185,000 plus GST



Based and built in Pirongia, our versatile and stylish transportable cabin is available to view at Woodville, Raglan. **Don't miss out on this opportunity - viewings by appointment only. Contact us today!**



Specifications

Bedrooms

- 2 x Double bedrooms with built in wardrobe storage (drawers and hanging)
- 3 x sets double power points each room
- Carpet
- Led lighting

Bathroom

- 3-sided 1200 x 1200 shower
- Extractor fan
- In-built recessed toilet
- Custom vanity & sink
- Mirror
- Laminate/plank flooring
- 2 x cavity sliding doors with privacy locks (Jack and Jill)

Kitchen

- Electric oven
- Gas hob
- Dishwasher
- Built in cabinetry including pantry and breakfast bar
- Laminate/plank flooring
- Laminate benchtop
- Multiple power points

Lounge

- TV ports and power switch
- Laminate/plank flooring

Interior Finish

- 3 x coat Resene paint system (Black White)

Exterior

- Black painted 12 mm structural treated ply with a cascade cavity batten and Douglas Fir rain screen, clear coat sealed (after timber had silvered off).
- Outside lights
- 5 Rib colour steel – Matt Black roofing
- 2 x Rinnai gas infinity unit (1 x each cabin)

Structure

- SIPS panels (Structural Insulated Panels) made with a polystyrene slab; layered by a strand board each side; installed all walls, floor and ceiling.
- Thermal Broken Joinery with Planitherm XN Low E glass and Argon gas. Two tone colour system, White on inside and Black on outside.
- Built on a steel sub-frame

Customisable Options

While delivery, deck, pergola, and rear patio/covered area are not included, they can be arranged at an extra cost to suit your preferences.

Secure your future home today with a 30% deposit. Expressions of interest are now open, with viewing available by appointment only.

Floor Area 54m²



